



THE MURPHY INSTITUTE
TULANE UNIVERSITY

THE EXCHANGE

Volume 12, No. 1

Fall 2014

ACHIEVING PARITY

POLITICAL ECONOMY HAS AN HISTORICAL IMAGE as a masculine field of study. From its founders—Adam Smith, David Ricardo, and Karl Marx—to its modern incarnations—Kenneth Arrow and John Rawls—the intellectual terrain has been largely populated by men. But here in our Political Economy program at Tulane, the scene has changed. The vast majority of our graduating class this year were women and, as the accompanying article indicates, our yearly prizes for academic excellence and service were also awarded to highly talented women graduates.



Octavia Abell (left) and Mwende Katwiwa (right)
at the 2014 Senior Dinner.

Looking at the past three years and the number of current majors, we can see that the Political Economy program has now achieved gender parity. This stands in sharp contrast to the predominantly male classes in the early years of our program.

What factors brought forward these striking changes? Two reflect general trends in education, while a third highlights our own commitment to our program. One important factor is that the study of economics, which is central to our program, is now more gender-balanced itself, with introductory courses attracting equal numbers of men and women. Our students are also better prepared in mathematical reasoning before they reach our program. Economics, with its inherently mathematical logic, seems less intimidating. Additionally, the demographic composition of Tulane has changed. Tulane's class matriculating in 2014 will be approximately sixty-two percent women.

continued on next page

THE MURPHY INSTITUTE

Core Faculty and Staff

Steven M. Sheffrin, *Executive Director,*
Department of Economics

Bruce Brower, *Department of Philosophy*

Alison Denham, *Department of Philosophy*

Eric Mack, *Department of Philosophy*

Douglas R. Nelson, *Department of Economics*

Mary K. Olson, *Department of Economics*

Jonathan M. Riley, *Department of Philosophy*

David Shoemaker, *Department of Philosophy*

Richard F. Teichgraber III, *Department of History*

Martyn P. Thompson, *Department of Political Science*

Mark Vail, *Department of Political Science*

John Louis Howard, *Associate Director*

Ruth A. Carter, *Program Manager*

Margaret M. Keenan, *Assistant Director,*
Center for Ethics and Public Affairs

Jinyoung Park, *Assistant Director,*
Center for Public Policy Research

THE CENTER FOR ETHICS AND PUBLIC AFFAIRS

Faculty Committee

Bruce Brower, *Department of Philosophy*

Ronna Burger, *Department of Philosophy*

Richard Culbertson, *School of Public Health*
and Tropical Medicine

Alison Denham, *Department of Philosophy*

Stephen Griffin, *School of Law*

Mary K. Olson, *Department of Economics*

Graham Owen, *School of Architecture*

Eric Mack, *Department of Philosophy*

Jonathan M. Riley, *Department of Philosophy*

Oliver Sensen, *Department of Philosophy*

David Shoemaker, *Department of Philosophy*

Richard F. Teichgraber III, *Department of History*

Martyn P. Thompson, *Department of Political Science*

Richard Velkley, *Department of Philosophy*



ACHIEVING PARITY

(continued from page 1)

We would be remiss, however, not to highlight the unique features of our own program. Our major is very challenging, requiring diverse skills in historical and philosophical analysis as well as mathematical and economic reasoning. To attract students to our major, we have devoted substantial resources to student advising, with an emphasis on personalizing the experience, and a dedicated advisor who guides our students through every year in the program. Classes are also relatively small so that students develop natural cohorts. Our professors make it evident to the students that they enjoy teaching in the program and take a real interest in their students' success. In the Political Economy major "everyone knows your name."

These changes in gender balance are important for the professional world as well. While the current leadership of the legal, business, and medical professions is still male dominated, today's entering classes in law schools, business schools, and medical schools are much more likely to be split evenly between the genders than in prior times. Even historically male-dominated graduate programs, such as economics and philosophy, have made great strides in recent years in recruiting new women graduate students. This means that our talented and multi-skilled graduates will have a wide range of opportunities facing them as they embark upon their professional paths.

Think for a second about the movie *The Firm*, based on the John Grisham novel and starring Tom Cruise. The corrupt tax law firm to which Tom Cruise was recruited was entirely male. No one found it unusual that all the tax partners were male. Now contrast this with the Tulane Tax Roundtable, co-sponsored by The Murphy Institute and the Tulane School of Law. Directed by a female law professor, Shu-Yi Oei, the Roundtable, now in its fourth year, has always had a majority of women faculty presenting papers. And this year, the paper presenters at The Murphy Institute's *Politics, Philosophy, and Economics* conference on "Justice and the Family" were all female. Along with the changes in the composition of our major, the equality of participation in our programs will continue to strengthen our tradition at The Murphy Institute of spirited, fearless, and open dialogue on social and political issues.



Steven M. Sheffrin, *Executive Director*

August 2014

2014 UNDERGRADUATE PROGRAM OVERVIEW

WOMEN STAND FORTH AT THE MURPHY INSTITUTE

Going beyond the popular admonition to “lean in”, undergraduate women in the Political Economy program continue to stand forth and be recognized for high academic honors and significant contributions to public service. The Class of 2014 serves as an exemplar of the gender parity in our program and represents the most recent apogee of achievement by another outstanding group of Political Economy graduates.

All academic and service awards given by the program this year were won by women. **AURORA GUNDERSEN '14**, this year's co-recipient of the Charles H. Murphy Prize, writes, “I adore The Murphy Institute. The Political Economy major is equally stimulating as it is challenging. I feel that I have acquired a highly sophisticated understanding of the most salient economic, moral, and political issues of our time. I would recommend this major to anyone interested in a career in business, law, politics, economics, academics, or any related field. I cannot speak highly enough about the professorial talent and academic rigor The Murphy Institute upholds.”

CAMERON CONKLIN '14, also co-recipient of the Charles H. Murphy Prize, had the distinction to be the first Political Economy major to graduate with the unique combination of an additional major in Communication with a minor in Architectural Studies. She was recognized in her Communication major by winning the Glendy Burke Medal, one of the oldest and most prestigious academic awards given by Tulane University.

This year's Senior Honors Scholar is **OCTAVIA LUCY MAWSON ABELL '14**, the president of the Tulane chapter of the National Society of Collegiate Scholars. Octavia writes, “I could not have chosen a better major than Political Economy. The professors in the department have continually challenged and inspired me, and my Political Economy courses have been some of the most useful of my college career. I am genuinely impressed by all of the professors at The Murphy Institute and their commitment to their students, and my experience as a Political Economy major stands out as one of the most rewarding aspects of my time at Tulane.”

MWENDE KATWIWA '14 received a Tulane 34 Award and was also recognized as a campus leader in public service, winning The Murphy Institute Public Service Award. She also received the Jim Runsdorf Excellence in Public Service Student Award, as well as a minimum of a dozen other awards in recognition of her contributions to Tulane and the New Orleans community.

Another of our outstanding seniors, **ANNE BRAG '14**, writes, “I have absolutely loved every second at The Murphy Institute! It was such an incredible and rewarding experience to have been a Political Economy major at Tulane; I truly do not know what I would have done if this program didn't exist. I was challenged in the best way by the best professors, and I have grown so much through the program. Thank you for an incredible four years!” ☺

CENTER FOR PUBLIC POLICY RESEARCH

Program Directors

James Alm, Department of Economics, Public Finance

*Douglas Harris, Department of Economics,
Education Policy*

Mary Olson, Department of Economics, Health Policy

*Jay Shimshack, Department of Economics,
Responsible Regulation*

EXTERNAL ADVISORY BOARD

*Michael McPherson (Chair),
President, Spencer Foundation*

*John Ferejohn, Samuel Tilden Professor of Law,
New York University*

*Geoffrey Galt Harpham, Director,
National Humanities Center*

*Bonnie Honig, Sarah Rebecca Roland Professor
of Political Science, Northwestern University*

*Stephen Macedo, Laurance S. Rockefeller Professor
of Politics and the University Center for Human
Values, Princeton University*

THE EXCHANGE

Line 58, Communications Consultant

Zack Smith, Photographer

*Send editorial correspondence to
The Murphy Institute, 108 Tilton Hall,
Tulane University, New Orleans LA 70118
Telephone: (504) 865-5317
Facsimile: (504) 862-8755*

*For questions and comments pertaining to
The Murphy Institute, contact jhoward2@tulane.edu;
for those pertaining to The Center for Ethics
and Public Affairs, contact mkeenana@tulane.edu;
for those pertaining to the Center for Public Policy
Research, contact jpark10@tulane.edu
Web site: www.murphy.tulane.edu*

17 NEWCOMB-TULANE COLLEGE SENIORS were awarded B.A. degrees in Political Economy at the May 2014 University Commencement. Several received high academic honors with four students graduating magna cum laude. The magna cum laude graduates are **CAMERON CONKLIN**, **AURORA GUNDERSEN**, **SAMUEL KING**, and **MINZALA GRACIA MVULA**.

Other members of the class of 2014 include **OCTAVIA LUCY MAWSON ABELL**, **ANNE BRAG**, **MEREDITH BURTON**, **JACKIE DREIER**, **KIMBERLY FERRARI**, **ARIEL JACOBY**, **MWENDE KATWIWA**, **KAYLA MURPHY**, **ALEXANDRA NASEREE**, **FREDERICK SCHAEFER**, **JOHN SPANGLER**, **CHRISTIAN COLBY WOODIS**, and **ALYSSA ZEUTZIUS**. Fall 2013 graduates include **JONATHAN PICK**, **ERNESTO POSADAS**, **ALEXANDRA ROMEO**, and **MEGHAN SPECTOR**.

The Charles H. Murphy Prize in Political Economy was awarded to **CAMERON CONKLIN** and **AURORA GUNDERSEN**. The Murphy Institute Public Service Award was presented to **MWENDE KATWIWA**.

The Senior Honors Scholar in Political Economy was **OCTAVIA LUCY MAWSON ABELL**.

CAMERON CONKLIN won the Charles H. Murphy Prize in Political Economy. She was a double major in Political Economy and Communication, with a minor in Architectural Studies. She won the Glendy Burke Medal in Communication, given to the student who best combines academic performance and contributions to the community in the field of Communication. She was the Editor-in-Chief of *theCharrette*, an interdisciplinary student-run journal based in the Tulane School of Architecture. She also worked as a student assistant in The Murphy Institute. Cameron is the Chief Communications Officer for Be Well Nutrition, Inc. and is pursuing a position teaching English in Thailand.



JACKIE DREIER was a double major in Political Economy and Art History. She was an intern at Neal Auction House in New Orleans, as well as Mark Seliger Photography Studio, Atlantic Records, and Christie's Auction House, all in New York. She is pursuing a position with an art gallery or auction house in New York.



[UNDERGRADUATE

MWENDE KATWIWA won The Murphy Institute Public Service Award. She was a member of Oak Wreath and received a Tulane 34 Award. Mwende was a double major in African and African Diaspora Studies and Political Economy. She won the Outstanding Student in African and African Diaspora Studies Prize. She was awarded the Martin Luther King, Jr. Community Service Award, the Jim Runsdorf Excellence in Public Service Student Award, the Leaders in Service Award, and the Bruce J. Heim Foundation Student Service Fellowship. She was a Public Service Fellow and the Service Chair for the Mortar Board National College Senior Honor Society. Mwende was chosen from among our senior majors this year to attend the national undergraduate conference for programs in PPE (Philosophy, Politics, and Economics) at the University of North Carolina-Chapel Hill and Duke University. She managed to prepare for the conference while also serving as the chair of the Black Arts Festival at Tulane, sponsored by the Black Student Union, where she was an executive board member, and also while co-producing the 2014 presentation of *The Vagina Monologues*. Mwende is one of the inaugural Tulane-AmeriCorps Fellows where she will be working with Women With a Vision, Inc., a community-based non-profit founded in 1991 by a grassroots collective of African-American women in response to the spread of HIV/AIDS in communities of color. In addition, Mwende is a nationally recognized poet and spoken-word artist and was named the RAW New Orleans Performing Artist of the Year.



OCTAVIA LUCY MAWSON ABELL was chosen by the Political Economy program as the Senior Honors Scholar in Political Economy. She received the Josephine Rose Loeb Award from the Newcomb Institute. As a member of the cross-country team, Octavia was named to the Conference USA Commissioner's Honor Roll and she was awarded the Conference USA Commissioner's Medal of Honor, the highest academic award given to student athletes in Conference USA. Octavia is a member of Honor Board and is the president of the Tulane

chapter of the National Society of Collegiate Scholars. She was an intern at the Jones, Walker law firm, a law intern specializing in immigration law at the Loyola Law School Clinic, and a campaign finance intern for Friends of Mary Landrieu. She will continue to work for Senator Mary Landrieu (D-LA) on the campaign finance team.



POLITICAL ECONOMY PROGRAM '14]

ANNE BRAG was a member of Tulane Pre-law Society and worked as an intern investigator for the Orleans Parish Public Defenders Office. She plans to work as a paralegal for Cravath, Swaine & Moore, LLP, in New York.

MEREDITH BURTON was a member of the Tulane Marching Band and was Parliamentarian for the Kappa Kappa Psi Honorary Band Fraternity. She won the Tulane Marching Band Full Service Award. Meredith will work for Patrick Miller, LLC, in New Orleans, while preparing to enter an MBA program.

AURORA GUNDERSEN won the Charles H. Murphy Prize in Political Economy. In her junior year she completed the year-long general course at the London School of Economics. Aurora was chosen from among our senior majors this year to attend the national undergraduate conference for programs in PPE at the University of North Carolina-Chapel Hill and Duke University. She



was a legal intern at Kellogg, Huber, Hansen, Todd, Evans & Figel, PLLC, and a business development intern at Green Light New Orleans. She served for two years as a senator in the School of Liberal Arts student government. Aurora will be an intern in the office of Senator Carl Levin (D-MI) in Washington, D.C.



KAYLA MURPHY was a double major in Political Economy and International Development. She worked as a student assistant at The Murphy Institute. She was a member of the Tibet Association and volunteered at Hollygrove Market and Farm. She plans to bike across the northern United States with Bike & Build to raise money and awareness about the affordable housing crisis.

ARIEL JACOBY was an after-school tutor for New Orleans Outreach at Akili Charter School and for Upward Bound. She interned at Molten Color Media, O'Hare & Associates, Pricing Nation, and Aflac. Ariel will work for Aflac in Metairie, Louisiana.

FREDERICK SCHAEFER was promotional director for WTUL. He served as a tutor at Sophie B. Wright Charter School and as an office assistant at Sojourner Truth Academy. He interned at Green Light New Orleans, Roof4Roof, and with Anne Rasmussen Political Consulting. Fred will teach special education, social studies, or math with Teach for America in New York, while earning a graduate degree in education.



continued on next page

SAMUEL KING interned at the Orleans Parish Public Defenders Office as a first appearances intern and as an intern investigator. He was a tutor at Lafayette Elementary School. Sam will be an AmeriCorps VISTA Fellow at Tulane where he will be working with Central City Renaissance Alliance to lobby politicians to support economic project grants in the Central City Development District. Sam plans to attend law school in the future.

MINZALA GRACIA MVULA was a double major in Political Economy and French. She was inducted into Phi Beta Kappa. She won the Leaders in Service Award, the Charles Oscar Maas Prize in French and Italian, and the France-Amérique Award. She was the Editor-in-Chief of the student journal *The Tulane Journal of International Affairs*. She was a member of the Tulane Organization for Global Affairs and the Economics Honor Society.



ALEXANDRA NASEREE was co-president of the Tulane Women's Club Lacrosse team. She was an International Affairs intern in the office of Mayor Mitch Landrieu, and also worked as a project coordinator for Outreach Tulane and the MLK Day of Service.

ALYSSA ZEUTZIUS was a member of Pi Beta Phi, Louisiana Alpha Chapter at Tulane, where she won the Chapter Service International Award for Outstanding Service Leadership. She was a client services intern at the Orleans Parish Public Defenders Office and a mentor at CP3 Afterschool Zone. Alyssa plans to work at Air Lease Corporation in Los Angeles, doing administrative work in the legal and finance departments. In the future she plans to pursue a graduate degree in public policy and public administration.



CHRISTIAN COLBY WOODIS will teach elementary English with Teach for America in Nashville, Tennessee.

KIMBERLY FERRARI was a double major in Political Economy and Environmental Studies. She interned at Global Green and New Orleans Children's Advocacy Center. She served as treasurer for Tulane Lives Beyond Breast Cancer. She works for Jones, Walker, LLC. ☺

THE JUDITH KELLEHER SCHAFFER SUMMER INTERNSHIP GRANT PROGRAM

Funds from the Judith Kelleher Schaffer Summer Internship Grant Program were used to endow eight fellowships in the amount of \$2,000 each for summer 2014. The students receiving the funds, along with their graduating class, hometown, and internship placements, are as follows:

ELIZABETH SCHOEN '15 from Covington, Louisiana, will intern for the New Orleans Culinary and Hospitality Institute in New Orleans, Louisiana.

JONATHAN BRODO '15 from Narberth, Pennsylvania, will intern in the office of Rep. Jim Gerlach (R-PA) in Washington, D.C.

JOHN CROWLEY '15 from Essex Junction, Vermont, will intern for Bird Peck Organics Farm in District Solan, Himachal Pradesh, India.

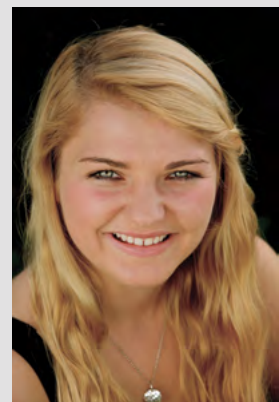
BOTHWELL GRAVES LEE '15 from Louisville, Kentucky, will intern for the Waterman, PLLC law firm in Louisville, Kentucky.

THOMAS O'BRIEN '15 from Lititz, Pennsylvania, will intern for the Orleans Parish Public Defenders Office in New Orleans, Louisiana.

MELISSA REITCHECK '15 from Crystal Lake, Illinois, will intern in the office of Councilwoman LaToya Cantrell in New Orleans, Louisiana.

NICHOLAS STONE '15 from Portland, Oregon, will intern in the office of Rep. Earl Blumenauer (D-OR) in Washington, D.C.

EMMA LOOS '15 from Mission Viejo, California, will intern for the Los Angeles River Revitalization Corporation in Los Angeles, California.



ALUMNI NEWS

Class of 1988

KEITH DOUGHERTY has been promoted to full professor in the Department of Political Science at the University of Georgia.

Class of 1991

JUSTIN PERRYMAN was promoted to lieutenant colonel in the Texas Army National Guard and now serves as the Brigade Judge Advocate for the 71st Troop Command in Austin, Texas. He was appointed as an adjunct professor of law by Washington University Law School in St. Louis, Missouri where he teaches a class on Oil and Gas Law.

Class of 1995

ANDREA MARSH has joined the faculty at the University of Texas School of Law, where she will serve as a clinical professor and Director of the Pro Bono Program at the William Wayne Justice Center for Public Interest Law. Andrea also continues to work at the Texas Fair Defense Project, where she has transitioned to the role of Senior Counsel. **DAVID SAS** has accepted a faculty position at the Mayo Clinic in Rochester, Minnesota. He will be a Senior Associate Consultant in Pediatric Nephrology and will continue his research in pediatric kidney stone disease.

Class of 1996

ERIC STRAUSS works as a producer for ABC News and was recently offered a 2014-15 Knight-Wallace Journalism Fellowship. He and his wife, Bridget, will move to Ann Arbor, Michigan for the academic year where Eric will study visual storytelling and social justice topics.



< Justin Perryman '91 was promoted to lieutenant colonel in the Texas Army National Guard

Class of 1999

Lieutenant Commander **MATTHEW LUDWIG** recently finished a two-year tour with the commander's staff of the 7th Fleet, which is forward deployed in Japan. He was responsible for all future operational planning and related policy within the 7th Fleet's area of responsibility, which encompasses more than 48 million square miles.

Eric Strauss '96 > is a producer for ABC News.



Class of 2000

PHILIP MANCINI is now Program Manager, Performance Management in the D.C. Department of Human Resources in Washington, D.C. **JEREMY PERELMAN** is a Partner at J. Goldman & Co., LP, a New York City-based investment management firm, where he focuses on the Retail & Apparel sectors. Jeremy lives in Scarsdale, New York with his wife, Leslie, and their three young sons. **TYLER STORTI** and his wife, Natalie, welcomed their first child, a boy named Beckett Graham, on May 13, 2014. Tyler is a partner at the law firm of Stewart, Sokol & Gray, LLC, in Portland, Oregon, where his practice emphasizes commercial, construction, and real estate disputes and litigation.

continued on page 11

HONORS, AWARDS, AND PUBLICATIONS



• **ERIC MACK**, Professor of Philosophy and Murphy Institute Faculty Member, is the author of “Elbow Room for Rights,” forthcoming in the first volume of *Oxford Studies in Political Philosophy* (Oxford University Press) and “The Political Philosophy of Robert Nozick,” forthcoming in the *Stanford Encyclopedia of Philosophy*.

• **JAMES ALM**, Professor and Chair of Economics and Program Director for Public Finance at The Murphy Institute’s Center for Public Policy Research, has been nominated as President-elect of the Southern Economic Association. He published, with A. El-Ganainy, “Value-Added Taxation and Consumption,” *International Tax and Public Finance* 20 (2013), and, with S. Leguizamón and J. Sebastian Leguizamón, “Revisiting the Income Tax Consequences of Legalizing Same-Sex Marriage,” *Journal of Policy Analysis and Management* 33 (2014).

• **MARTYN THOMPSON**, Associate Professor of Political Science, published “Michael Oakeshott: Konservativismus und politische Bildung” in *Praxis und Politik - Michael Oakeshott im Dialog* (2013) and “The Logic of the History of Ideas: Mark Bevir and Michael Oakeshott,” *Journal of the History of Ideas* 73 (2012).

• **RICHARD F. TEICHGRAEBER**, Professor of History, published “Tenure Matters: An Historian’s Perspective” in the *Journal of Academic Freedom* 5 (2014).



• **MARK VAIL**, Associate Professor of Political Science, published “Varieties of Liberalism: Keynesian Responses to the Great Recession in France and Germany,” *Governance* 27 (2014).

• **DOUG HARRIS**, Associate Professor of Economics, University Endowed Chair in Public Education, Director of the New Orleans Education Research Alliance, and Director of the Education Policy Program at The Murphy Institute’s Center for Public Policy Research, is principal investigator for grants totaling \$3.2 million awarded to the Education Research Alliance for New Orleans by the Laura and John Arnold Foundation and the Smith Richardson Foundation. Harris is also the principal investigator for “Testing the Promise: A Randomized Trial of a Promise College Scholarship for Urban Public School Students,” a \$3 million grant from the Institute of Education Sciences, a branch of the U.S. Department of Education. He is the co-author, with Tim Sass and Anastasia Semykina, of “Value-Added Models and the Measurement of Teacher Productivity,” forthcoming in the *Economics of Education Review*. Harris also published, with Tim Sass, “Skills, Productivity and the Evaluation of Teacher Performance,” *Economics of Education Review* 40 (2014).

• **DOUGLAS NELSON**, Professor of Economics, published a book, *Economics and Politics of Trade Policy* (World Scientific Publishing Company, 2014). With Spiros Bougheas, he is co-author of “On the Political Economy of High Skilled Migration and International Trade,” *European Economic Review* 63 (2013).



• **RONNA BURGER**, Professor of Philosophy and Catherine & Henry J. Gaisman Chair, was an invited speaker last fall at St. John’s College, Annapolis, Maryland, where she gave a public lecture on “Moses as Legislator and Founder.” In the spring she presented “In the Court of an Oriental Despot: On the *Book of Esther*” at Roosevelt University, Chicago, Illinois, and in Tulane’s Judeo-Christian Studies Lecture series.



• **MARY OLSON**, Associate Professor of Economics and Murphy Institute faculty member, organized a mini-conference, Behavior and Innovation in Health Care Markets, which was held at Tulane University on April 4, 2014, and continued to serve as the Director of the Health Policy Program for The Murphy Institute's Center for Public Policy Research. She also published "Eliminating the U.S. Drug Lag: Implications for Drug Safety" as the lead article in the *Journal of Risk and Uncertainty* 47 (2013) and published "Regulation of Safety, Efficacy, and Quality" in the *Elsevier Encyclopedia of Health Economics* in April of 2014.



• **JONATHAN RILEY**, Professor of Philosophy and Murphy Institute faculty member, served as the first DAAD Visiting John Stuart Mill Chair in Social Philosophy at the University of Hamburg in Germany during February-August 2013, where he gave a graduate seminar on Mill's liberal utilitarian philosophy, as well as a second graduate seminar on contemporary Anglo-American political philosophy. He published "Isaiah Berlin's 'Minimum of Common Moral Ground,'" *Political Theory* 41 (February 2013) and contributed a chapter, "Rawls, Mill, and Utilitarianism," to *A Companion to Rawls* (Wiley-Blackwell, 2013).

• **ALISON DENHAM**, Associate Professor of Philosophy, was invited by the Chinese Academy of Social Sciences and Beijing International University as a Distinguished Visiting Professor to deliver four public lectures on agency. She is the author of "Tragedy without the Gods: Autonomy, Necessity, and the Real Self," forthcoming in the *British Journal of Aesthetics*, and "Celan's Song: Pictures, Poetry and Epistemic Value" in *Philosophy of Poetry*, forthcoming from Oxford University Press.

• **STEVEN SHEFFRIN**, Executive Director of The Murphy Institute and Professor of Economics, published a new book, *Tax Fairness and Folk Justice* (Cambridge University Press, 2013) as well as "Restitution for Ponzi Scheme Victims: The Symbiotic Relationship of Tax and Securities Laws," *Rutgers Business Law Review* 10 (2013).

• **DAVID SHOEMAKER**, Associate Professor of Philosophy, edited *Oxford Studies in Agency and Responsibility*, Volume 1 (Oxford University Press, 2013), and published "Qualities of Will," *Social Philosophy and Policy* 30 (2013) and "On Criminal and Moral Responsibility," in Mark Timmons, ed., *Oxford Studies in Normative Ethics*, Volume 3 (Oxford University Press, 2013).



David Shoemaker's *Oxford Studies in Agency and Responsibility* and Steven Sheffrin's *Tax Fairness and Folk Justice*

*For the sake of brevity, we asked our faculty to limit journal articles to two.
For a complete list of publications, please see our website at murphy.tulane.edu/people/*

YATES LECTURE 2013

ARTHUR BROOKS

The Secret of Happiness



FOR THOUSANDS OF YEARS people across the globe have been asking the same question: What is the secret of happiness? This year's Yates Lecturer, economist Arthur C. Brooks, began his answer to this age-old question using survey data and prior research. Brooks reported that happiness is composed of three factors: genetics, life events, and personal choices or lifestyle. Brooks defined lifestyle as things that deliver happiness directly and give us "good luck." Based on his reading of the literature, his prescription for increasing our happiness portfolio consisted of paying more attention to four areas in our lives: faith and life philosophy, family, community and friends, and meaningful work. Debunking the myth that money buys happiness, Brooks argued that the real secret to happiness is through "earned success," or creating value with your life and value in the lives of other people. This notion of earned success is driven by individuals making choices that match their skills with their passions, encourages personal responsibility, and allows individuals to receive rewards when successful. Brooks himself believes the system that best enables earned success is the free enterprise system. Therefore, his main policy recommendation is to fight for the free

enterprise system for all people. Brooks maintained that it is a moral imperative for the government to work to lift people out of material poverty, but in doing so the government must not constrain free enterprise.

ARTHUR C. BROOKS is president of the American Enterprise Institute (AEI) as well as the Beth and Ravenel Curry Scholar in Free Enterprise at AEI. He earned his doctorate in policy analysis from the RAND Graduate School and previously held the Louis A. Bantle Professorship of Business and Government at Syracuse University, where he taught economics and social entrepreneurship. Dr. Brooks is the author of *The New York Times* bestseller *The Road to Freedom: How to Win the Fight for Free Enterprise* (Basic Books, 2012). His other books include *The Battle* (Basic Books, 2010), *Gross National Happiness* (Basic Books, 2008), *Social Entrepreneurship* (Prentice-Hall, 2008), and *Who Really Cares* (Basic Books, 2006).

The Mary C. Parker Yates Lecture, endowed in 1996 by Murphy Institute alumna Rebecca Yates ('89) Velandier in memory of her mother, is The Murphy Institute's major public academic event. Designed to promote university-wide discussion of issues of current concern, the annual Yates Lecture brings leading thinkers and public figures to the Tulane campus.

Class of 2003

ADAM ARONOVITZ co-founded a global cooking and food literacy education 501c3 non-profit called The Cookbook Project. He has been leading field projects across the globe, training more than 400 Food Literacy Educators working in more than 35 U.S. states and 20 countries. **CHRISTIAN DALLMAN** lives in Chicago and is an associate at Fragomen, Del Rey, Bernsen & Loewy, LLP.

Adam Aronovitz >
'03 co-founded
The Cookbook
Project.



Class of 2005

JULIE NIEMCZURA DE CARVALHO is Senior Project Manager of Communication Programs with Links Media, where she leads communication and advocacy activities for the United States Agency for International Development's Amazon Malaria Initiative. She earned her Master of Public Health from the University of Virginia in May 2013, and now resides in the Washington, D.C. metro area.

Class of 2007

RICH COUNTS works as a Senior Account Executive for Salem Communications subsidiary Townhall Media. Rich also serves as the Chief of Staff of the Young Republican National Federation. Rich was recently named YRNF Man of the Year at the 2014 Young Republican Leadership Conference and also received the Leadership Institute's Conservative Leader Award.

Class of 2008

STEVEN LEVINE has joined K&L Gates LLP as an Associate in the firm's Washington, D.C. office. He focuses his practice on investment management matters. **LAURA WEISS** is an MBA student at Duke University's Fuqua School of Business. She was selected as a Duke MBA Forté Foundation Fellow, a fellowship program that helps to advance women in business.

Class of 2012

ERIC PETERSON works as a policy analyst for Americans for Prosperity in Arlington, Virginia. **MATTHEW TURNER** is a 3L at University of Virginia Law School. He will be working as a summer associate at the Houston offices of Vinson & Elkins.

Class of 2013

ASHLEY FOX lives in Boston and works at The Cadmus Group, an environmental consulting firm in Waltham, Massachusetts. **EMILY LATIMER** has been traveling and working in New Zealand. She will return to the United States in July and plans to move to Washington, D.C. ☺



< Emily Latimer
'13 traveling in
New Zealand.



CHECK US OUT ON YOUTUBE!

At Tulane and throughout New Orleans, The Murphy Institute is known for putting on fascinating lectures on current issues by leading academics. In order to share these lectures more widely, we've begun featuring our public lectures on our website and our new YouTube channel.

To see our latest lectures, check us out on YouTube at: [YouTube.com/MurphyTulane](https://www.youtube.com/MurphyTulane)

CONFERENCES

HEALTH POLICY CONFERENCE

BEHAVIOR AND INNOVATION IN HEALTH MARKETS

This one-day conference brought leading health policy experts to Tulane University to present work on behavior and innovation in healthcare markets. Led by Mary Olson, director of The Murphy Institute's Health Policy program, this meeting continued efforts to build bridges between scholars in different disciplines with similar interests in health policy.



© PBurch Celentano / Tulane University

organized by
MARY OLSON

NEERAJ SOOD

Associate Professor, School of Pharmacy and
Director of International Programs at the
Leonard D. Shaeffer Center for Health Policy and
Economics, University of Southern California
Price Shopping for Healthcare

SHIN-YI CHOU

Frank L. Magee Distinguished Professor
of Economics, Lehigh University
***The Benefits of Prenatal Care: Evidence from
the SARS Epidemic in Taiwan***

MICHAEL DARDEN

Assistant Professor, Department of Economics,
Tulane University
***The Star Treatment: Estimating the Impact of
Star Ratings on Medicare Advantage Enrollments***

YOU SUK KIM

Ph.D. Candidate, Department of Economics,
University of Pennsylvania
***Advertising Competition and Risk Selection
in Health Insurance Markets: Evidence from
Medicare Advertising***

NINA YIN

Post-Doctoral Teaching Fellow,
The Murphy Institute, Tulane University
***Pharmaceuticals, Incremental Innovation
and Market Exclusivity***

MARY OLSON

Associate Professor, Department
of Economics, Tulane University
***The Impact of Regulatory Policy on
Firm Incentives: Reducing Delays in
Drug Development***

BARTON HAMILTON

Robert Brookings Smith Distinguished Professor
of Entrepreneurship, John M. Olin School of
Business, Washington University in St. Louis
Health and the Option Value of Medical Innovation

BEN ROIN

Hieken Assistant Professor in Patent Law and
Co-Director of Petrie-Flom Center for Health Law
Policy, Biotechnology & Bioethics, Harvard Law School
Solving the Problem of New Uses

MATT HIGGINS

Associate Professor of Strategic Management
and Faculty Research Fellow, National Bureau
of Economic Research, Scheller College of Business,
Georgia Institute of Technology
***Starving (or Fattening) the Golden Goose:
Generic Entry and Incentives for Early-stage
Pharmaceutical Innovation***

CONFERENCE ON INTERNATIONAL FINANCIAL REGULATION

Courtesy of Tulane Law School



organized by
ADAM FEIBELMAN

This two-day conference, organized by Professor Adam Feibelman of the Tulane Law School, explored the changes in financial regulation that have occurred since the recent financial crisis. Drawing on the expertise of legal scholars of financial regulation, the workshop examined the issues that were successfully addressed by legislation and those issues that still remain today. It addressed both domestic and international issues in financial regulation and monetary policy.

ADAM FEIBELMAN
Professor of Law, Tulane Law School
Welcome and Introduction

YESHA YADAV
Assistant Professor of Law,
Vanderbilt University Law School
***Beyond Efficiency in
Securities Regulation***

ANNA GELPERN
Professor of Law, Georgetown
University Law Center
***The Minister's New
(Collective Action) Clause***

KATHRYN JUDGE
Associate Professor of Law,
Columbia Law School
***Intermediaries and
Institutional Design***

MEHRSA BARADARAN
Assistant Professor of Law,
School of Law, University of Georgia
Regulation by Hypothetical

DAVID ZARING
Assistant Professor of Legal Studies
and Business Ethics, Wharton School
of Business, University of Pennsylvania
The Financial Crisis in the Courts

STAVROS GADINIS
Assistant Professor of Law, School of
Law, University of California, Berkeley
***Global Technocrats: The Spread
of Standards on Accounting (IFRS),
Cross-Border Fraud (IOSCO),
and Money Laundering (FATF)***

HILARY ALLEN
Assistant Professor of Law, College
of Law, Loyola University New Orleans
A Financial Stability Mandate for All

HEIDI SCHOONER
Professor of Law, Columbus School of
Law, The Catholic University of America
***The Dogma of Capital Regulation as
a Response to the Financial Crisis***

JEFFREY MANNS
Associate Professor of Law, The George
Washington University Law School
***Sovereign Rating
Regulatory Dilemma***

WORKING GROUPS

HEALTH POLICY WORKING GROUP TALKS

NINA YIN Post-Doctoral Fellow, The Murphy Institute
Pharmaceuticals, Incremental Innovation and Market Exclusivity

ALAN BARRECA Assistant Professor of Economics
*Adapting to Climate Change: Temperature-Mortality
Relationship over the 20th Century*

CHARLES STOECKER Assistant Professor,
School of Public Health and Tropical Medicine
*Where Have All the Young Men Gone? Using the Sex Ratio to Measure
Previously Unobserved Fetal Health Changes Due to the Clean Air Act*

PUBLIC POLICY WORKING GROUP TALKS

KEITH FINLAY Assistant Professor of Economics
Stigma in the Labor Market

TESSA DAVIS Visiting Assistant Professor of Law, Tulane Law School
*Mapping the Families of Tax: The Functions of the Families of the
Internal Revenue Code*

CRISTIAN SEPULVEDA Post-Doctoral Fellow, The Murphy Institute
Toward a More General Theory of Revenue Assignments

THE 4TH ANNUAL TULANE TAX ROUNDTABLE brought together tax scholars from around the country, resident Tulane faculty, and Tulane students for discussion and debate about important tax policy issues. The roundtable showcased the drafts and works-in-progress of its participants and subjected these works to rigorous analysis in a discussant-driven workshop format. This roundtable was co-sponsored by The Murphy Institute and Tulane Law School.

JAMES ALM

with Jay A. Soled

Professor and Chair, Department
of Economics, Tulane University

***Tax Basis Determinations,
Pass-Through Entities, and
Taxpayer Noncompliance***

JINYAN LI

with Thaddeus Hwong

Professor of Law, Osgoode Hall
Law School, York University

***Combating BEPS through LSAs:
The Approach of China and India***

SUSANNAH TAHK

Assistant Professor of Law,
University of Wisconsin Law School

The Tax War on Poverty

JENNIFER BIRD-POLLAN

Assistant Professor of Law,
University of Kentucky College of Law

***Electing Fairness: A Proposal for
a Check-the-Box Style Regime for
Same-Sex Couples' Filing Status***

PHILIP HACKNEY

Assistant Professor of Law,
Louisiana State University Law Center

***Business Leagues, the Collective Action
(Non) Problem and Tax-Exemption***



© PBurch / Tulane University

organized by
SHU-YI OEI

SHU-YI OEI

Hoffman F. Fuller Associate Professor
of Tax Law, Tulane Law School

Taxing Human Equity

GEORGE YIN

Edwin S. Cohen Distinguished Professor of Law and
Taxation and Thomas F. Bergin Teaching Professor,
University of Virginia School of Law

***Reforming (and Saving) the IRS by
Respecting the Public's Right to Know***

STEVEN SHEFFRIN

with Grant Driessen

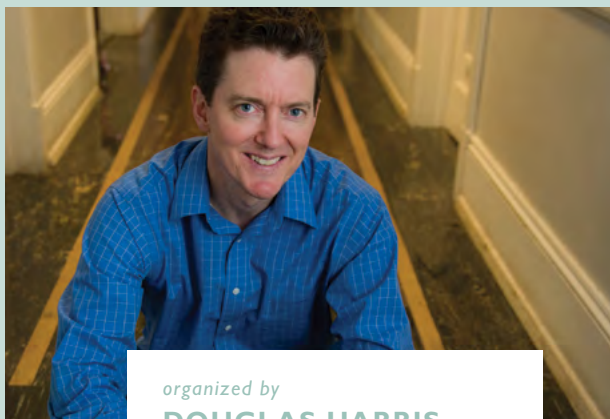
Professor of Economics & Director of
The Murphy Institute, Tulane University

***Tax Competition, Agglomeration, and
the Mobility of Professional Athletes***

NATIONAL RESEARCHERS WORKSHOP

EDUCATION RESEARCH ALLIANCE FOR NEW ORLEANS

This workshop, organized by Douglas Harris, Director of The Murphy Institute's Program in Education Research and Director of the newly created Education Research Alliance for New Orleans, welcomed researchers from across the country into the heart of the nation's school reform efforts. Harris introduced the participants to the goals of the Alliance, as well as the preliminary research agenda. They then participated in break-out sessions centered around four major components of the New Orleans charter reforms: Charters, CMOs, and Authorizers; Test-Based Accountability; Parental Choice; and Teachers and Principals. The resulting list of research questions was presented to the entire group of researchers who were then asked to select and rank the questions by how interested they were in studying them.



© PBurch Celentano / Tulane Publications

organized by
DOUGLAS HARRIS

The overarching goals of this event were to establish a comprehensive research agenda and to form a nationwide network of researchers with a common interest in New Orleans education reforms. Together, this group will tackle some of the questions most critical to understanding and improving the city's unprecedented reforms. The hope is that the results of these collaborative efforts will be important and relevant not only to the New Orleans school system, but to urban school districts nationwide.

WHY THE FEDERAL DEBT STILL MATTERS

A PANEL DISCUSSION ABOUT OUR FISCAL FUTURE

This panel brought together a cross section of experts from the academic, business, and think-tank communities to address strategies to reduce the federal debt. Co-sponsored with the Campaign to Fix the Debt, this event came at a crucial point in our state and national discussions about our fiscal future, and offered students, faculty, and the public a unique opportunity to join the conversation about the macroeconomic implications of our fiscal policies. Panelists presented short- and long-term options to deal with the debt, highlighting the political challenges associated with each alternative. A consensus prevailed among the panelists that while the debt is not currently a pressing crisis, it is a looming issue that can no longer be ignored.



From left to right: moderator Thomas Usdin and presenters Steven Sheffrin, Paul Stebbins, and William Gale.

PRESENTATIONS

WILLIAM GALE *Co-Director of the Tax Policy Center, The Brookings Institution*

STEVEN SHEFFRIN *Director of The Murphy Institute and Professor of Economics, Tulane University*

PAUL STEBBINS *Executive Chairman, World Fuel Services Corporation*

MODERATOR

THOMAS USDIN *Attorney, Mediator, and Adjunct Professor of Law, Tulane School of Law*

SEMINARS & LECTURES



organized by
BRUCE BROWER

Organized by Bruce Brower, Center for Ethics and Public Affairs (CEPA) lectures and seminars draw eminent scholars and renowned speakers to Tulane. Presentations address a wide array of issues, including moral responsibility, ethical theory, distributive justice, and the relevance of scientific findings for moral concerns.

MARK TIMMONS

Professor of Philosophy, University of Arizona

Love of Honor, Emulation, and the Psychology of the Devilish Vices

BAS van der VOSSEN

CEPA Faculty Fellow and Assistant Professor of Philosophy, University of North Carolina-Greensboro
When Activism Is a Vice: Why Political Philosophers Should Stay out of Politics

NATHAN TARCOV

Professor of Social Thought and Political Science and Director of the Leo Strauss Center at the University of Chicago
Machiavelli's Republicanism



< RYAN GOODMAN

Anne and Joel Ehrenkrantz Professor of Law at the New York University School of Law, Professor of Politics, and Professor of Sociology, NYU
Socializing States: Promoting Human Rights through International Law

WALTER SINNOTT-ARMSTRONG >

Chauncey Stillman Professor of Practical Ethics at the Kenan Institute for Ethics at Duke University, Partner Investigator at the Oxford Centre for Neuroethics, and Research Scientist with The Mind Research Network in New Mexico
Does Neuroscience Undermine Responsibility?



RICHARD KRAUT

Charles and Emma Morrison Professor in the Humanities, Northwestern University
Plato, Oysters, and Experience Machines

BARBARA FRIED >

William W. and Gertrude H. Saunders Professor of Law, Stanford University
The Consequences Matter: But to What?



CHRISTIAN COONS

CEPA Faculty Fellow and Associate Professor of Philosophy, Bowling Green State University
Welfare and Care

GWEN BRADFORD

CEPA Faculty Fellow and Assistant Professor of Philosophy, Rice University
Pain and Perfectionism

DAVID LEFKOWITZ

Associate Professor of Philosophy, Politics, Economics, and Law (PPEL), University of Richmond
Blame and the Criminal Law 3.0

PPE 2014: CONFERENCE ON JUSTICE, THE FAMILY, AND PUBLIC POLICY

The PPE Conference is an annual event organized by the editors of *Politics, Philosophy, and Economics*. Papers presented at the conference are targeted for subsequent publication in this top-rated academic journal, which aims to bring moral, economic, and political theory to bear on the analysis, justification, and criticism of political and economic institutions.

GINA SCHOUTEN
Assistant Professor of Philosophy,
Illinois State University
***Obstacles to Equality:
A Stability Argument
for Gender Egalitarian
Political Interventions***

INGVILD ALMÅS
Associate Professor,
Norwegian School of Economics
Fairness and Family Background

INGRID ROBEYNS
Professor of Practical Philosophy,
Erasmus University, Rotterdam
Is Procreation Special?

ELIZABETH BRAKE
Associate Professor of Philosophy,
Arizona State University
***Fair Care: Sharing out
the Burdens and the
Benefits of Caring Labor***

SERENA OLSARETTI
ICREA Research Professor,
Universitat Pompeu Fabra
***Children as Negative
Externalities?***

NOWAR 2013: NEW ORLEANS WORKSHOP ON AGENCY AND RESPONSIBILITY

NOWAR is a biennial event organized and led by David Shoemaker. The workshop brings together leading thinkers in the interdisciplinary fields of agency and responsibility to present and discuss new scholarship. Papers presented at NOWAR are considered for publication in the *Oxford Studies in Agency and Responsibility* series edited by Shoemaker and published by Oxford University Press.

Keynote speakers included JOHN MARTIN FISCHER, *Distinguished Professor of Philosophy, University of California, Riverside*; and SUSAN WOLF, *Edna J. Koury Professor of Philosophy, University of North Carolina-Chapel Hill*.



organized by
DAVID SHOEMAKER



< DOUGLAS HUSAK
Distinguished Professor of Philosophy and
Law and Co-Director of the Institute for Law
and Philosophy at Rutgers University
The Persistence of Drug Prohibition



< STEPHEN STICH
Board of Governors Professor
at Rutgers University
The Evolution of Morality?

DAVID SCHMIDTZ
Kendrick Professor of Philosophy,
University of Arizona
Ideal Justice

NIKO KOLODNY
Professor of Philosophy,
University of California, Berkeley
Justifying the State

KIERAN SETIYA
Professor of Philosophy,
University of Pittsburgh
The Mid-Life Crisis

PROFILES OF FACULTY FELLOWS

GWEN BRADFORD spent her fellowship year living in her favorite part of New Orleans and doing what she loves. She lived in the French Quarter in an historical apartment, complete with a courtyard, and spent the year completing research for her new book project. Her new book will investigate how the development of our human capacities relates to our well-being, specifically the value of achievement. Bradford also used her fellowship year to finish her first book, *Achievement*, which is forthcoming from Oxford University Press, and to produce two papers responding to problems with perfectionist theories, as well as a paper on uniqueness and another on praise and blame.



GWEN BRADFORD

Bradford valued her time at The Murphy Institute, including the support provided by the Institute's director, Steven Sheffrin, who "took an active and genuine interest in my work and the other fellows, and I was always glad to see him in the center and impressed that he would often come by my office to say hello and chat—and not just about research, but also about new books and topics of general interest about town." She also appreciated the rapport between the fellows. "We got along so well, and their supportive camaraderie

was what really made the year special. We discussed our work with each other, and I got terrific feedback not only about my research, but also concerning various matters of the profession."

In the fall, Bradford returns to Rice University where she is Assistant Professor of Philosophy. Just four years out of graduate school—she earned her PhD from Yale in 2010—with a book forthcoming from Oxford University Press and another on the way, her future looks bright.

CHRISTIAN COONS has been a busy man. A newly tenured Associate Professor at Bowling Green State University, Coons chose to spend a fellowship year at The Murphy Institute's Center for Ethics and Public Affairs. By any account, he's been enormously productive. Coons made progress on his new book project, *Moral Meditations*, modeled after Descartes' *Meditations on First Philosophy*, in which he applies Descartes' epistemological method to moral philosophy. He also completed an edited volume on manipulation, and wrote five other papers on topics that range from self-defense to value theory to well-being.



CHRISTIAN COONS

Coons relished discussing his work with The Murphy Institute faculty, especially Bruce Brower and David Shoemaker, and praised the staff and student workers at The Murphy Institute—who found his presence and talent encouraging in its own right. Other Institute members took professional inspiration from his philosophical acumen. As one graduate fellow put it, "Watching Christian argue, whether in response to a paper or in response to a question, is fantastic; he is one of the—if not the—quickest, clearest, and most energetic interlocutors I've ever encountered."

Coons returns to Bowling Green State University with fond memories of his time in New Orleans where he reveled in the "sense of relaxed celebration which persists through the year." New Orleans, he said, "is vibrant, diverse, and *sui generis*."

It's an overcast morning in April, but BAS van der VOSSEN is smiling. April is crawfish season in New Orleans, and he's delighted by the nightly crawfish boils at his neighborhood restaurant, Frankie & Johnny's. As the weather clears, it looks as though he will be able to make his afternoon tennis match with Murphy Institute director Steven Sheffrin. On days like this, he enjoys walking through Audubon Park to get to his office at The Murphy Institute.

In spite of all New Orleans has had to offer, van der Vossen has accomplished a great deal over the academic year. He's made substantial headway on his main research project in which he argues that property rights are integral to human autonomy. "If I take your property, I also take your ability to act autonomously. For example, if I take your retirement savings away, I also take away your goals and the ability to live the end of your life as you've planned," he explains.

His fellowship also allowed van der Vossen the flexibility to take on additional projects, including an article for an edited volume on self-determination to be published by Cambridge University Press and another article on international property rights. And he relished the opportunity to discuss his work with Tulane faculty, especially David Shoemaker, known for his work on agency and responsibility, and Eric Mack, a leading expert on property rights.

Since graduating Oxford University with a doctorate in political theory in 2008, van der Vossen has made a name for himself in political philosophy. In the fall, he returns to the University of North Carolina at Greensboro as an Assistant Professor of Philosophy, where he is known as one of UNCG's most vibrant young professors.



BAS van der VOSSEN

For information about the 2015-2016 faculty fellowship opportunities, please visit murphy.tulane.edu/programs/center/

FELLOWS 2013–2014

FACULTY FELLOWS

GWEN BRADFORD
*Assistant Professor of Philosophy,
Rice University*

CHRISTIAN COONS
*Associate Professor of Philosophy,
Bowling Green State University*

BAS van der VOSSEN
*Assistant Professor of Philosophy,
UNC Greensboro*

GRADUATE FELLOWS

ALEX MCMANUS
Department of History

NATHAN STOUT
Department of Philosophy

PAUL WILFORD
Department of Philosophy

FRANKLIN WORRELL
Department of Philosophy

FELLOWS 2014–2015

FACULTY FELLOWS

HILLE PAAKKUNAINEN
*Assistant Professor of Philosophy
Syracuse University*

MASSIMO RENZO
*Associate Professor of Philosophy
University of Warwick*

NEIL SINHABABU
*Assistant Professor of Philosophy
National University of Singapore*

GRADUATE FELLOWS

CHRISTOPHER BOOM
Department of Philosophy

DANIEL DAVENPORT
Department of Philosophy

THOMAS MULLIGAN
Department of Philosophy

CHRISTOPHER WILLOUGHBY
Department of History



THE EXCHANGE *Fall 2014*

A PUBLICATION OF
THE MURPHY INSTITUTE
AT TULANE UNIVERSITY



CONTENTS

<i>Achieving Parity</i>	I
<i>2014 Undergraduate Program Overview</i>	3
<i>Alumni News</i>	7
<i>Honors, Awards, and Publications</i>	8
<i>Yates Lecture</i>	10
<i>The Center for Public Policy Research</i>	12
<i>The Center for Ethics an Public Affairs</i>	16